

NS-430H-01
NS-530H

电子套结机

ELECTRONIC BAR TACKING MACHINE

节能性高、清洁耐久!

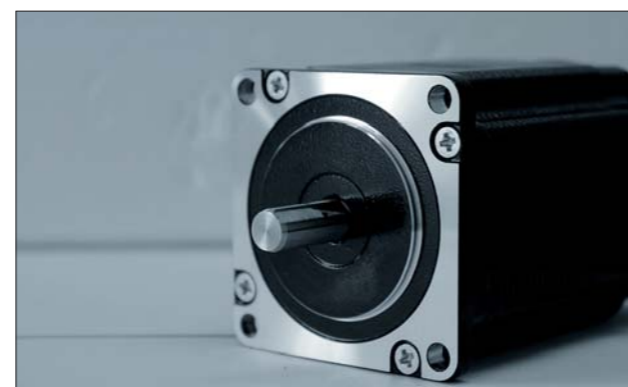
Energy-saving, clean and durable!



NS-530H



进口旋梭、梭壳
Imported hooks



进口步进电机
Imported step motor

产品特点 Product features

1. 采用黑金刚针杆和轴承挑线杆, 通过固态油脂微油润滑, 防止面料油污, 无油无虑, 清洁耐久。

1. With black diamond bar and bearing thread take-up lever, through the solid oil micro-oil lubrication, to prevent the fabric oil, clean and durable.



2. 扩大中厚料规格的可缝性

中厚料规格方面, 可以通过改进挑线杆行程提高线迹的稳定性。扩大厚料缝制的可缝性, 增强面料的应对力。

2. Expand the available of stitching for thickness fabric

In the case of medium and thick material specifications, the stability of the stitch can be improved by improving the thread take-up. Expand the seam of the thick material sewing, and enhance the response force of the fabric.

4. 联机挑线杆自动回位

开机后自动找上针位, 便捷舒适、轻松高效。

4.Thread take-up with self-return

Self-return, efficient.

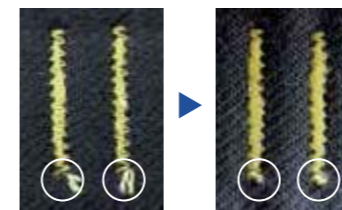


3. 减短缝制后的余线长度 (短线头规格)

通过改进切线结构, 在靠近针孔处切线, 使余线长度变短。因此可以减少缝制后的剪线工作。

3. Shortened length of sewing (short thread size)

By improving the trimmer structure, so that the length of the line shorter. The sewing thread after the work can be reduced.



以往
Tradition

NS-430H-01

6. 支持 USB 数据接口

支持 USB 数据接口接入, 内存更大, 存储更快捷。

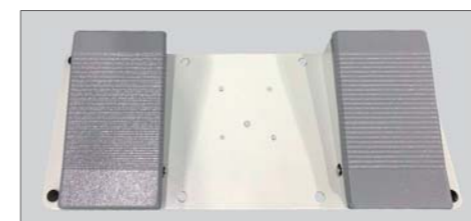
6.Support USB data interface

support USB data interface access, memory bigger, storage faster.



5. 支持双联脚踏, 左踏板和右踏板可分开操作, 缝制特殊产品时, 定位更容易。

5. Support double pedal, left pedal and right pedal can be separated from the operation, sewing special products, positioning easier.



应用实例 Application example



规格 Specifications

规格 Specification	NS-430H-01	NS-530H
用途 Use	套结 Bar tacking	套结/钉扣 Bar tacking / button attaching
最高缝纫速度 Max. sewing speed	3200 rpm	
缝制区域(X × Y) Sewing area (X × Y)	最大Max. 40 × 30mm	
送布方式 Feed way	间歇性送布(脉冲马达驱动方式) Intermittent feed (pulsed motor drive mode)	
针距 Stitch length	0.05-12.7mm	
最大针数 Max. number of stitches	5000针/1个图案 5000 needle / 1 pattern	
供油方式 Oil supply	微量供油 Micro-oil supply	
压脚驱动方式 Presser foot drive mode	脉冲马达驱动方式 Pulsed motor drive mode	
压脚上升量 Height of presser foot	最大Max. 17mm	
使用旋梭 Hooks	半旋转标准旋梭 Semi-rotating standard rotary hook	
扫线装置 Thread wipe device	标准装备 Standard equipment	
切线装置 Trimmer device	标准装备 Standard equipment	
夹线器 Thread catch	选购件 Option	
数据存储方式 Data storage	U盘/USB接口 Flash card (using SD card can add any pattern)	
外部数据储存媒介 External data storage medium	U盘	
循环程序数 Number of cycle programs	最多可登录30个(各50个步骤) Max. Up to 30 (each 50 steps)	
存储数据 Storing data	已设置89种图案(最多可追加512种图案, 追加总针数约在500000针以内)*2 Has set up 89 kinds of patterns (up to add up to 512 kinds of patterns, additional total needle number of about 500000 pin) * 2	
马达 Motor	AC伺服马达550W(直接驱动) AC servo motor 550W(Direct drive)	
电源 Power supply	单相Single phase 220V	
重量 Weight	头部: 约57kg、操作面板: 约0.4kg、控制箱: 约9kg Head: about 57kg, operation panel: about 0.4kg, control box: about 9kg	